

# EATON

# Powerware

**Powerware® LanSafe™**  
Power Management Software



## Features

- Sequential SafetyNet shutdown
- UPS group shutdown and control
- Work-in-progress saved throughout the network
- Stealth Mode Operation
- Cost Savings Calculator
- Event history summary
- Battery replacement warning
- Network & serial/USB connections
- Status@aGlance™ feature
- Power on/off scheduling via calendar
- UPS load segment (receptacle) control
- Local/remote UPS power on/off
- Power-on delay
- PowerGraph
- Email alerts
- Network broadcast alerts
- Command execution on UPS alerts
- Personalized UPS alert notifications
- SNMP proxy agent-GET and SET support

Running mission-critical applications and connecting widely-distributed nationwide and global operations are key strategic initiatives in today's business organizations. The ability to provide a steady, clean and undisturbed power flow to IT hardware in the network is paramount in keeping the systems available at all times.

However, the primary purpose of the IT infrastructure is to process, store and protect the information that is stored or en-route in the network. The data itself, and the ability to move it and process it at any given time, is priceless.

LanSafe power management software provides, in combination with an uninterruptible power system (UPS), the best possible protection for this valuable data. Whether at home or at work, LanSafe has you covered with its unique, proactive risk-management features.

## Why Use LanSafe Software?

1. Prevent system crashes – when a power failure outlasts the UPS battery runtime, LanSafe automatically performs a graceful operating system shutdown.
2. Avoid data loss – LanSafe saves all work-in-progress.
3. Protect valuable applications – LanSafe protects from corruption by closing applications in an orderly fashion.
4. Stay informed – monitor and receive UPS alarms via network broadcasts, SNMP, email, pager or mobile phone.
5. Control your power – manage all UPSs on the network, check battery health, and create sequential shutdown scenarios.
6. Communicate with NMS - integrates UPSs into the SNMP network management system.

## How would you like to View your UPS today?

LanSafe v. 5 offers three user-friendly, custom views for monitoring status, metering information and the internal workings of a UPS. Each view provides a different level of available data, allowing various user groups to select the most compelling and useful view for their specific needs.

### PowerScope View

The default view for single phase UPSs is 3-D PowerScope, which provides crisp, real-time animation of the power flow through the UPS components. Status and metering information is intuitively available at-a-glance in a graphical format. UPS component topology is automatically detected depending on the UPS model used.

**Toolbar buttons**  
Quick-launch most common tasks

**LanSafe controller name, location and UPS model**

**Animated UPS topology display**

**Output voltage meter**

**Load percent**  
Percent of maximum output load the UPS supports the number increases when new devices are plugged into the UPS

**Input voltage meter**

**Battery runtime**  
Amount of time the UPS can operate on battery power

**Advanced Battery Management (ABM)<sup>®</sup>**  
animated status indicator doubles battery life by charging only when necessary

**Active events log**

### ControlRoom View

The ControlRoom View is the default view for 3 phase UPSs. It provides a comprehensive listing of UPS metering data including inputs, outputs, battery and UPS status information. Color-coded LED status indicators draw attention to UPS alarms.

**Input status panel**  
Incoming power measurements from utility provider

**Output Status Panel**  
Outgoing power measurements (what your UPS is feeding the protected devices)

**LED status indicators**  
Color-coded LEDs draw attention to UPS alarms

**Bypass/misc. panel**  
Displays important status information - stay informed of UPS temperature, fan and bypass status, etc.

**Battery status panel**  
Keeps you informed on vital UPS battery-related information

**View Logs**  
Check previously occurred alarms and status changes

## History View

The LanSafe History View provides a 24x7x365 visual representation of the system event log in a calendar format. UPS events can easily be reviewed by year, at-a-glance. Color-coded dates display power events that have occurred in the system.

It has never been easier to review historical power problems: what happened, when it happened, how severe the event was, as well as how often it has annually reoccurred. The user may focus on any calendar date to obtain information on the event time, along with a description of the problem.

### Go back in time

Select previous years with a calendar-format events summary

### Double-click color-coded event dates for more info

Get detailed info of occurred power events

### 24x7x365 Power Event Calendar

Check a full year of power events at-a-glance

### Date since data collected

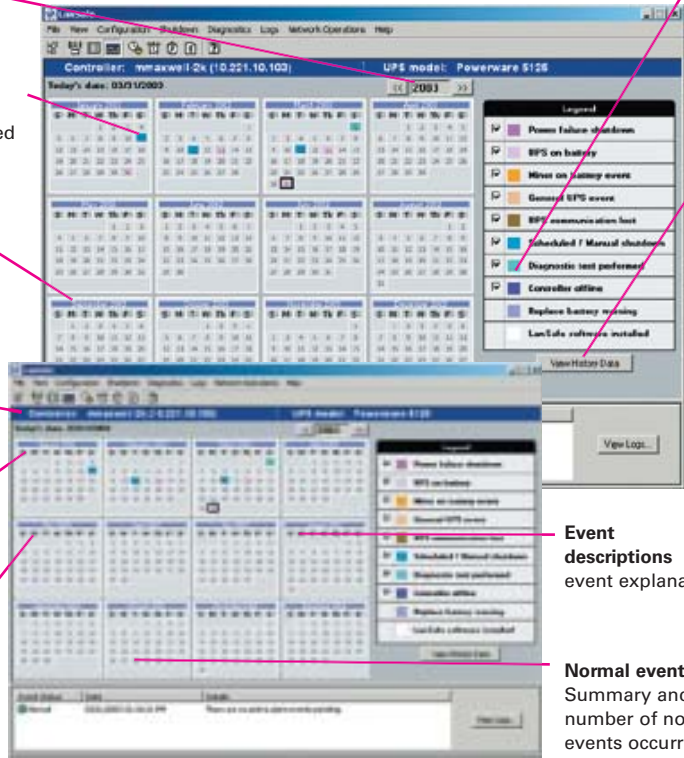
Data collection begins when LanSafe is installed

### Critical events

Summary and number of critical events occurred

### Warning events

Summary and number of warning events occurred



### Select events to review

Review only those events that you are interested in

View history data summary Actual number of normal, warning and critical power events occurred

Event descriptions event explanations

Normal events Summary and number of normal events occurred

## Stealth Mode Operation - The invisible sentinel

The Eaton-exclusive Stealth Mode Operation feature enables LanSafe to run invisibly in the background without visual traces. This is particularly useful when integrating LanSafe into a point-of-sale (POS) system, automatic teller machine (ATM) or other environment in which user-awareness of LanSafe is not an option.

When enabled, the user will not see any UPS alarm popups on local ATM/POS computer monitors due to power problems. However, system administrators monitoring the ATM/POS network will still receive remote SNMP alarms to their network management systems.



### Stealth Mode Operation

Removes visual traces, like the LanSafe system tray icon and popup alarms, but still notifies the system administrator "silently" via SNMP

## Cost Savings Calculator - Discover the bottom line

The Cost Savings Calculator (patent pending) feature is used to determine the amount of money saved by the UPS due to prevented downtime. With this innovative new tool, LanSafe will do the math and generate reports using statistical data gathered from that specific UPS system, based on the number of power failures and blackout duration. Calculations can easily be exported to spreadsheets, email and other applications. The user, according to their environment, enters the base costs for calculations.

### One-time cost

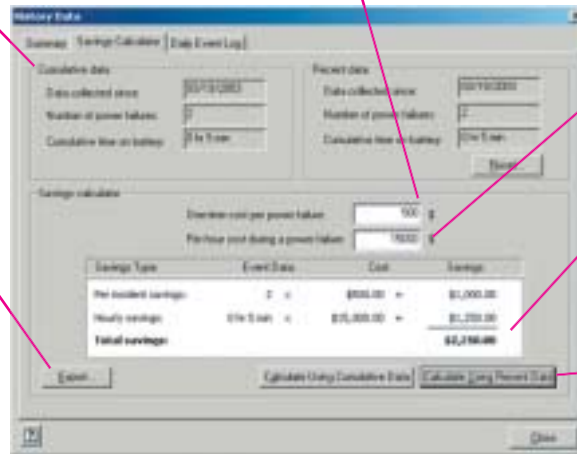
One-time cost per incident factors include data loss, customer transaction failure, and hardware and software infrastructure damage

### Cumulative data

LanSafe keeps track of the total time the UPS has been on battery and the number of power failures

### Export calculations

Paste cost savings calculations into your favorite reporting application



### Per hour cost

Per hour cost factors include hourly rates for idle employees and missed transaction opportunities

### The bottom line

How much money your UPS is saving by preventing costly downtime

### Calculate data

Calculate either recent or cumulative savings

## Stealth Mode Operation - The invisible sentinel

LanSafe v. 5 incorporates Automatic Regional Settings Detection with local language support capabilities. Date, time, temperature and UPS receptacle graphics are automatically selected according to the operating system's regional settings. Measurements are displayed around the globe in the formats users are familiar with. Any of the detected settings can be overridden manually.

### Display system info in main views

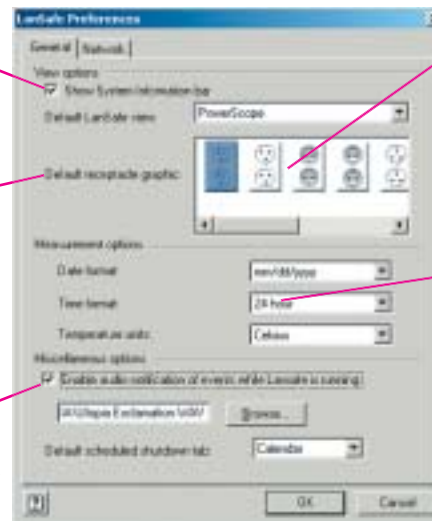
Enable/disable system info bar in main views

### Choose default view

Select a favorite LanSafe view as the default: PowerScope, ControlRoom or History

### Audible alarms

Enable/disable audio notifications



### Select receptacles per region

Choose the receptacle displayed in the PowerScope View according to the region (auto-selected using system locale)

### Change date, time, and temperature formats

Fahrenheit/Celsius temperature, 24/12 hour time and world date formats (auto-selected using system locale)

## LanSafe v. 5 - The revolution of power management

The next generation of LanSafe power management software, version 5, introduces a number of revolutionary features to the power management arena.

### Cost Savings Calculator

The patent pending Cost Savings Calculator can be used to determine the amount of money saved by the UPS solution due to prevented downtime.

### Stealth Mode Operation

The exclusive Stealth Mode

Operation feature enables LanSafe to run invisibly in the background without visual traces. This capability is particularly useful when integrating the application into a POS, ATM, or other environment where users should not be aware of LanSafe.

### Three Optional Views

The 3-D PowerScope View, along with a new innovation, the ControlRoom View, take the guesswork out of understanding UPS metering and status information. PowerScope is the default for viewing single

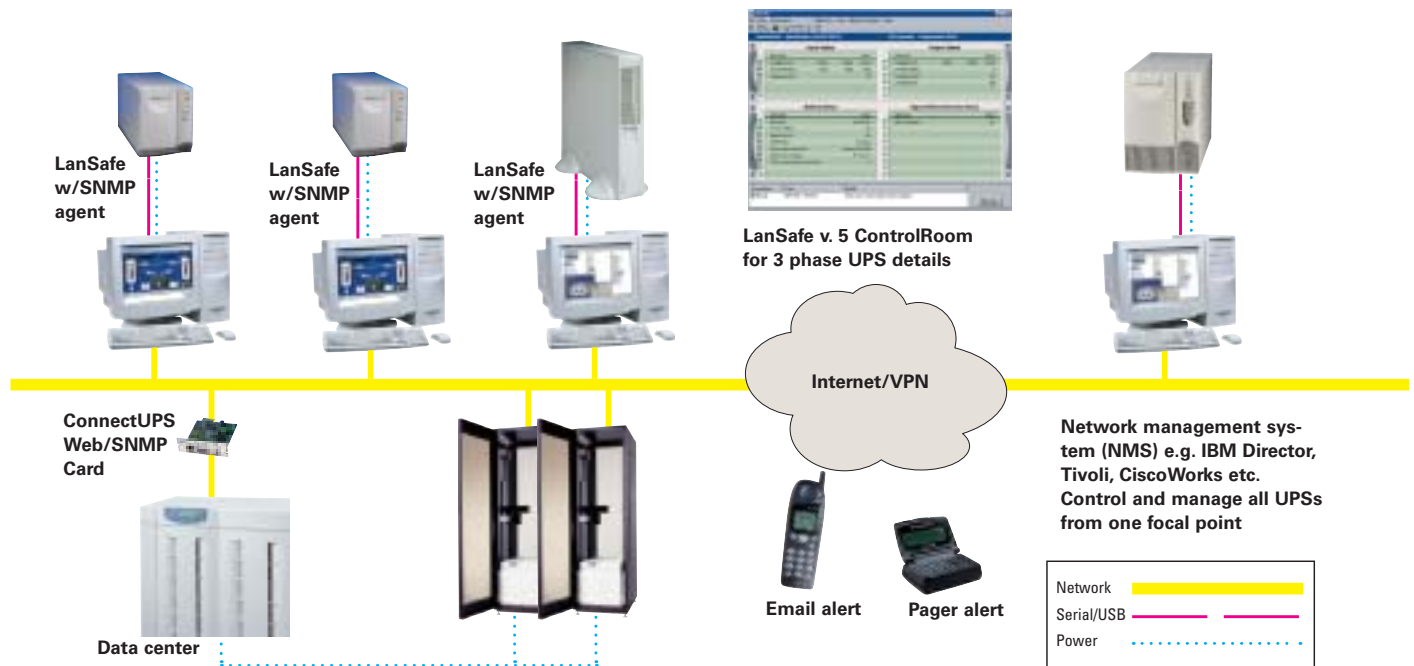
phase UPSs while ControlRoom serves as the default for three phase UPSs. The third display format available is the History View, which allows users to review a year of UPS events at-a-glance in a calendar format. The favorite default view can be changed at any given time via the LanSafe preferences menu.

### Automatic Regional Settings

LanSafe v. 5 incorporates Automatic Regional Settings Detection with local language support capabilities. Date,

time, temperature and UPS receptacle graphics are automatically selected according to the operating system's regional settings. Measurements are displayed around the globe in formats users are familiar with.

With intuitive views and functions, a simplified installation procedure, and an array of powerful new features, comprehensive power management has never been easier.



The new LanSafe v. 5 provides comprehensive support for both Powerware single-phase and three-phase UPS products via serial, USB and network connectivity options.

# System Requirements

## WINDOWS

Windows 2000

Windows Server 2003

Windows 98

Windows Me

Windows NT 4.0 (Intel)

Windows XP

## UNIX

HP-UX

IBM AIX (RISC & PowerPC)

Red Hat Linux

SuSE Linux

SCO UNIX

SGI IRIX

Solaris

## OTHER

Mac OS

Novell NetWare

## LanSafe v. 5

- Supported Powerware UPS
- Single Serial Port Card X-Slot
- Expansion Chassis with compatible option card
- USB Card X-slot
- Web/SNMP 10/100 Card (X-Slot, Firmware v3.11 or higher required)
- ConnectUPS-M (Firmware v4.01 or higher required)

\* Check [www.powerware.com](http://www.powerware.com) for most recent software updates and version support

UNITED STATES  
8609 Six Forks Road  
Raleigh, NC 27615 U.S.A.  
Toll Free: 1.800.356.5794  
or 919.872.3020

[www.powerware.com](http://www.powerware.com)

CANADA  
Ontario: 416.798.0112

LATIN AMERICA  
Argentina: 54.11.4343.6323  
Brazil: 55.11.3616.8500  
México: 52.55.5488.5252

EUROPE/MIDDLE EAST/AFRICA  
Denmark: 45.3686.7910  
Finland: 358.94.52.661  
France: 33.1.6012.7400  
Germany: 49.7841.666.0  
Italy: 39.02.66.04.05.40  
Norway: 47.23.03.65.50  
Sweden: 46.8.598.940.00  
United Kingdom: 44.1753.608.700

ASIA PACIFIC  
Australia/NZ: 61.2.9878.5000  
China: 86.21.6361.5599  
HK/Korea/Taiwan: 852.2745.6682  
India: 91.11.2649.9414 to 18  
Singapore/SEA: 65.6829.8888

LanSafe, X-Slot, Status@aGlance are trade names, trademarks and/or service marks of Eaton Power Quality Corporation or its subsidiaries and affiliates. All other trademarks are property of their respective owners.



# Powerware

© 2005 Eaton Corporation  
All Rights Reserved  
Printed in USA  
SFT19FXA  
April 2005